



Operation manual

eYc THM06

Industrial Accuracy

Temp. & Humidity Transmitter



Contents

I. Security considerations	P.02
II. Dimension	P.03
III. Diagram	P.03
IV. Software and calibration operation step	P.04
4.1 Application Program statement	P.04
4.2 Setting RS-485 connection	P.04
4.3 Scan RS-485 connection	P.06
4.4 Setting RS-485 ModBus Protocol	P.08
4.5 Display and save data	P.10
4.6 Choose parameter of Output	P.13
V. Display and Keypad operation menu	P.14
VI. Inspection and maintenance	P.17

I. Security considerations

Please read this Specification carefully, prior to use of this, and keep the manual properly, for timely reference.

Solemn Statement :

This product can not be used for any explosion-proof area.

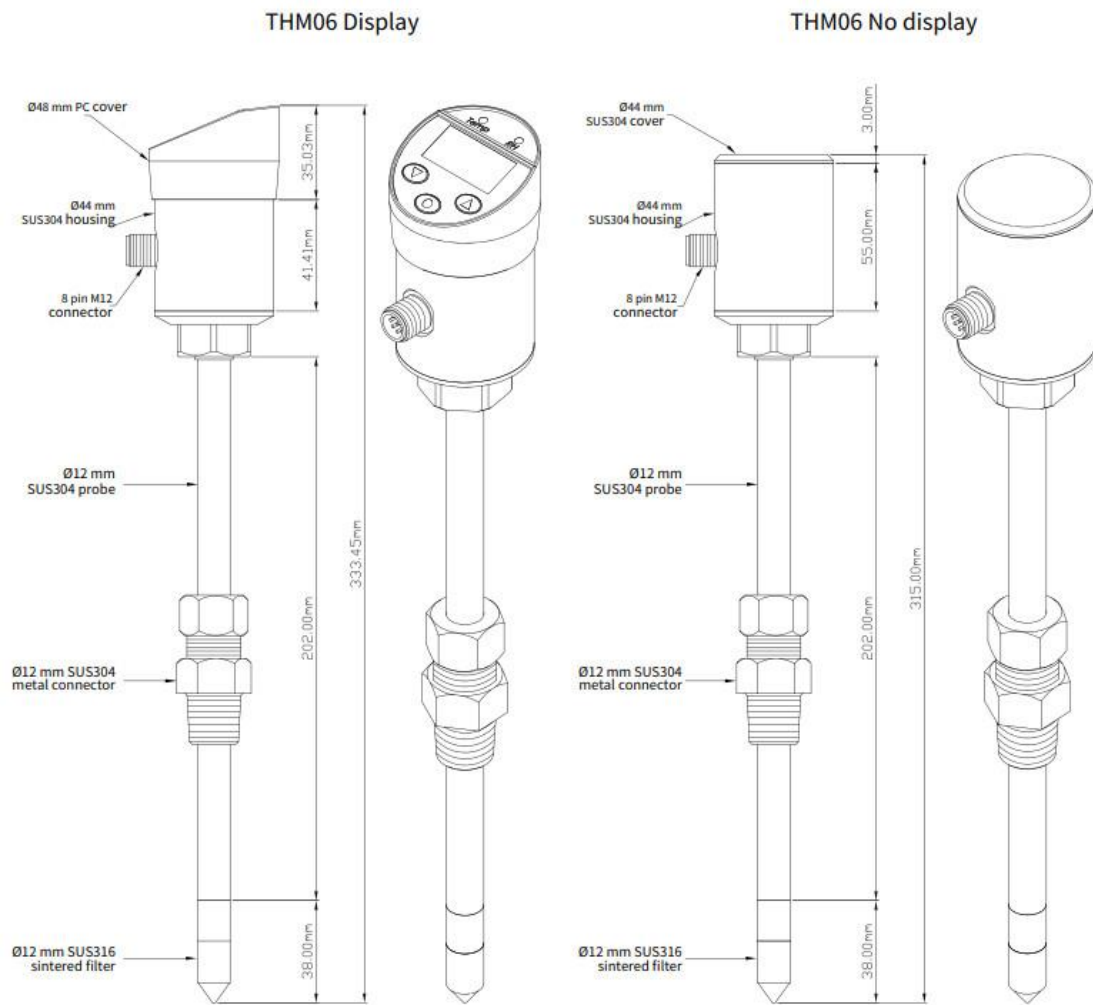
Do not use this product in a situation where human life may be affected.

eYc-tech will not bear any responsibility for the results produced by the operators !

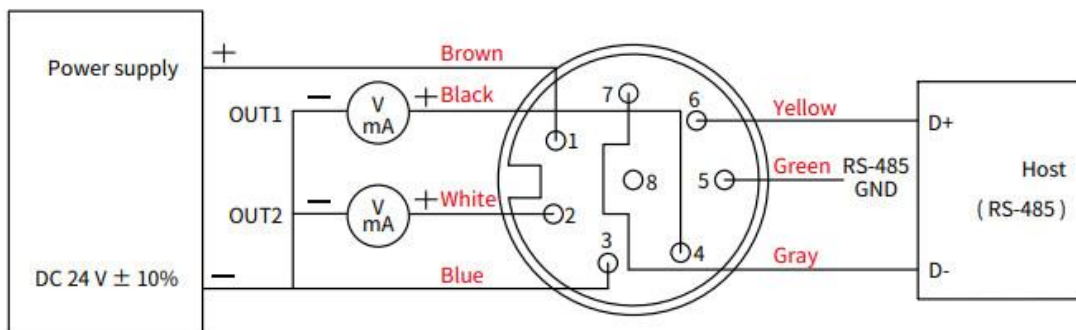
Warning!

- Installation and wiring must be performed by qualified personnel in accordance with all applicable safety standards.
- This product must be operated under the operating conditions specified in manual to prevent equipment damages.
- Please using the product under the ordinary pressure, or it will influence safe problem.
- This product must be operated under the operating condition specified in this manual to prevent equipment damages.
- This product must be operated under the normally atmospheric condition to prevent equipment damages.
- To prevent products damage, always disconnect the power supply from the product before performing any wiring and installation.
- All wiring must comply with local codes of indoor wiring and electrical installation rules.
- Please use crimp type terminal.
- To prevent personal injury, do not touch the moving part of product in operation.
- It may cause high humidity atmosphere during the product was breakdown. Please take safety strategy.

II. Dimension



III. Diagram



M type (8P)

IV. Software and calibration operation step

4.1 Application Program statement

1. Portable application : eYc-THM06-UI-20201120-1.0.2.EXE

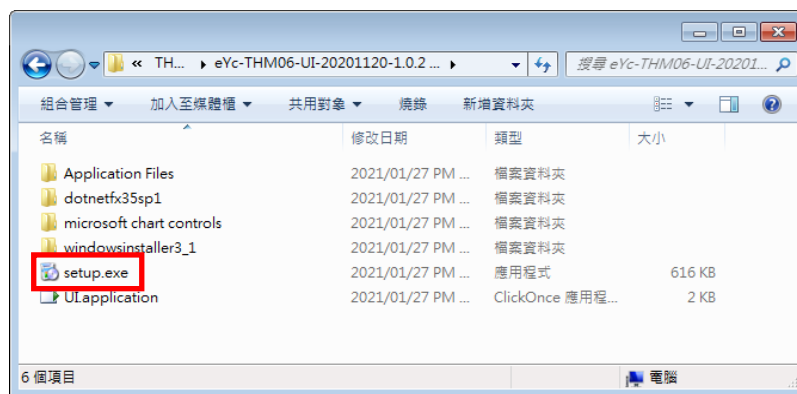
(※Please use installation program when free program doesn't execute)

2. Installation program : eYc-THM06-UI-20201120-1.0.2 (INSTALLER).rar

(Download : <https://drive.google.com/file/d/1c5d16SxIQhf187XY5DaMFDn95Ir77QnA/view?usp=sharing>)

a. Operating System requirements : above Windows XP

b. Click Setup to install



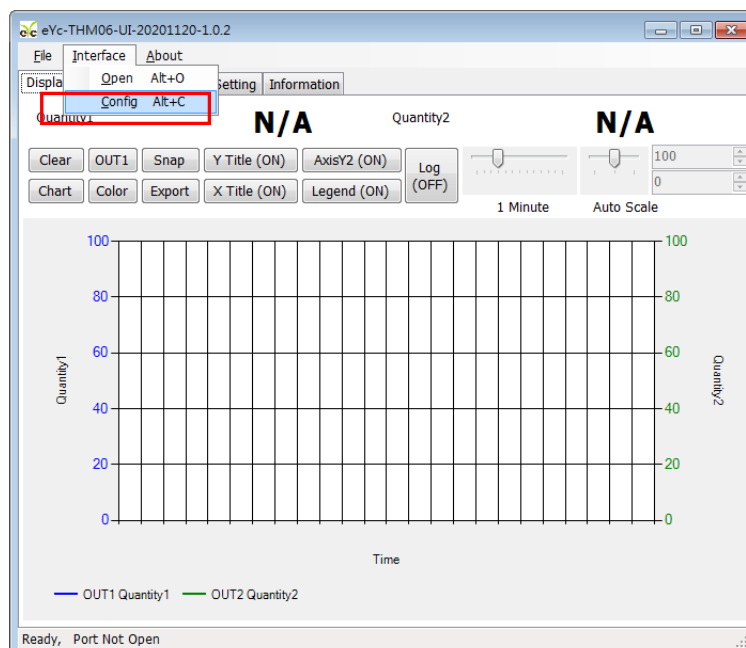
3. Other application program requirements : above Microsoft Office 2003

4.2 Setting RS-485 connection

1. Connect product to PC via RS-485 cable

2. Execute "THM UI"

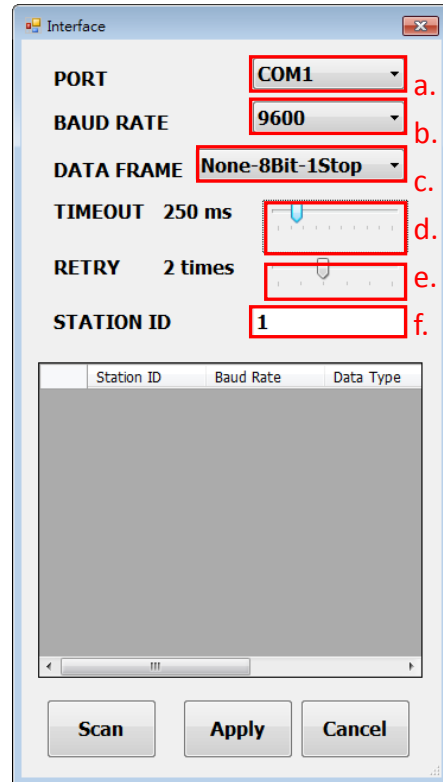
3. Click "Interface > Config"



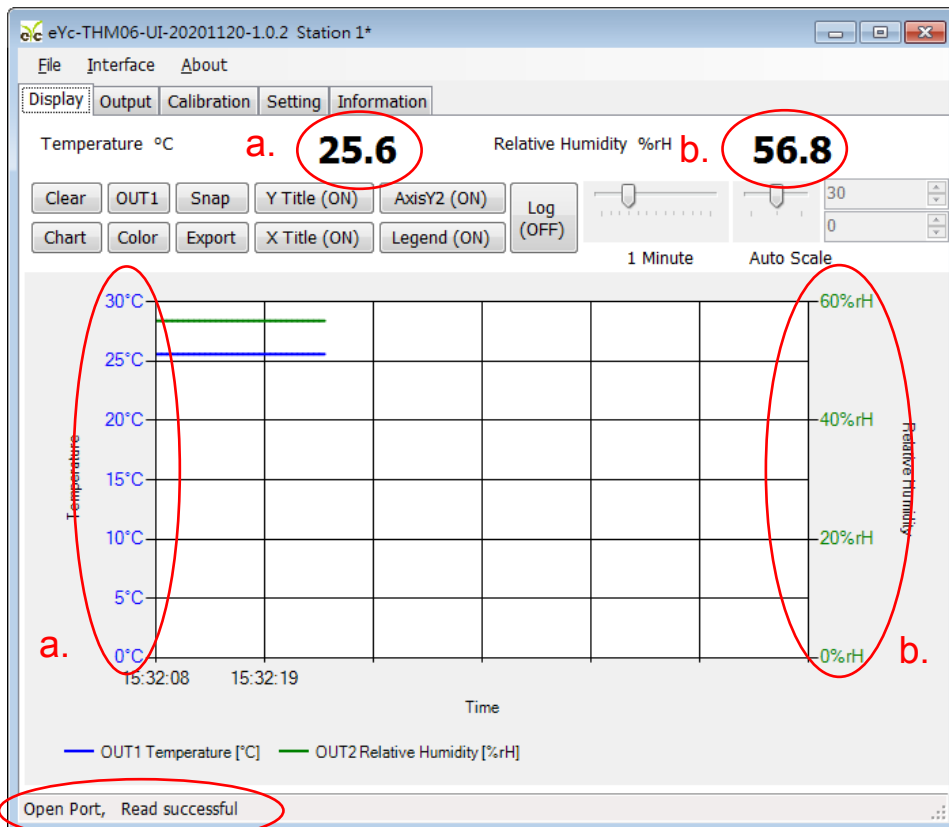
Industrial Accuracy Temp. & Humidity Transmitter

4. Select the corresponding values of com port as following :

- a. Port : Check Come Port
- b. Baud Rate
- c. Data Frame
- d. Timeout
- e. Retry
- f. Station ID(Default 1)



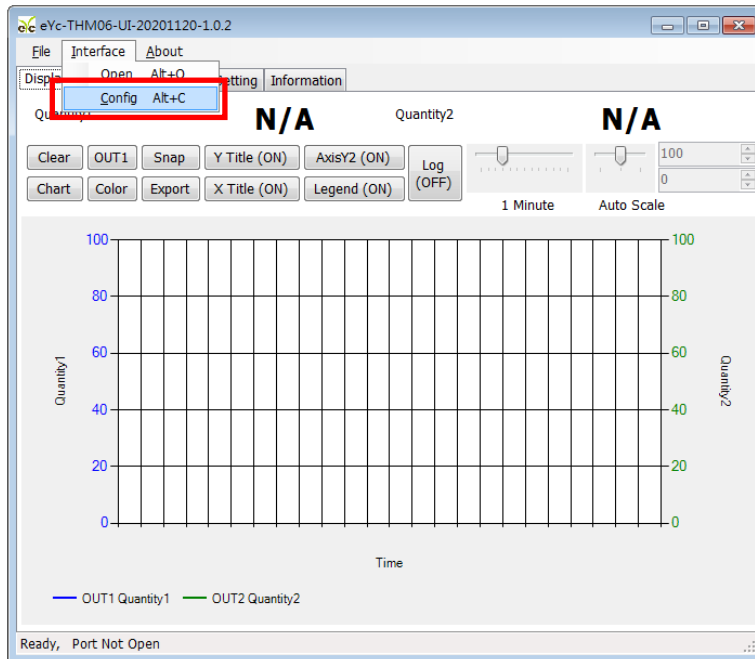
- 5. Click “Apply”
- 6. Connect successfully
 - a. Show value and trend chart of temperature
 - b. Show value and trend chart of relative humidity
 - c. Show “Open Port, Read successful”



4.3 Scan RS-485 connection

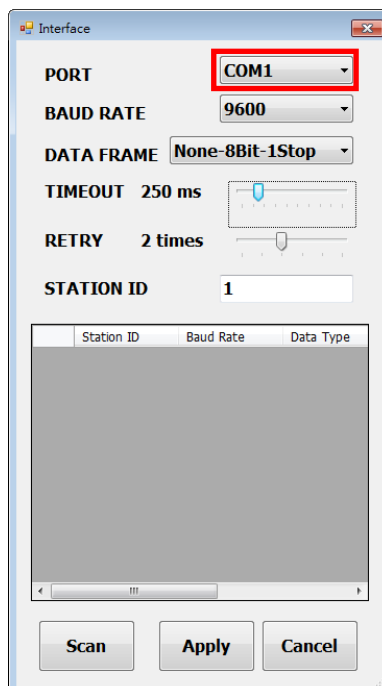
※Use scan function to connect when forgetting the connection information or having more facilities .

1. Connect the product to PC via RS-485 cable
2. Execute “THM UI”
3. Click “Interface > Config”



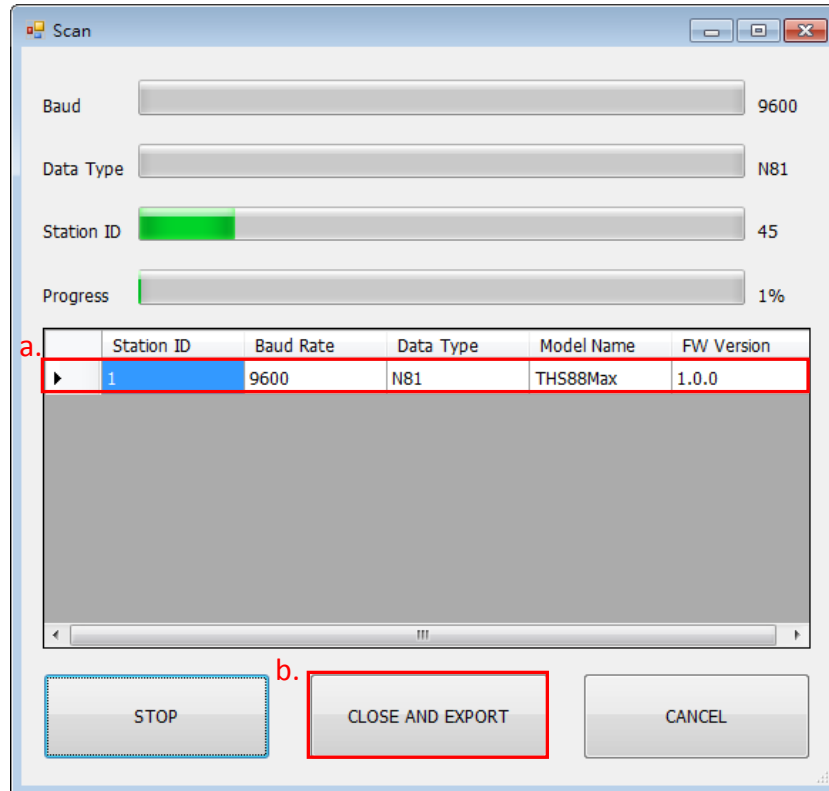
4. Select the corresponding values of com port as following:

- a. Port :
- b. RS-485

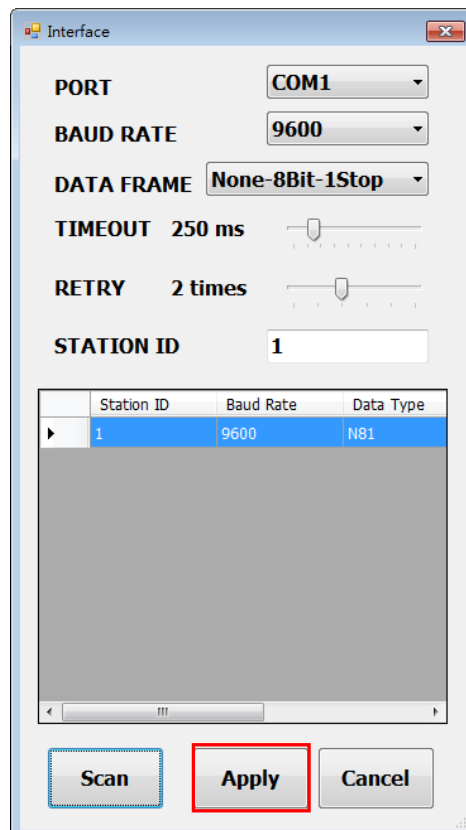


Industrial Accuracy Temp. & Humidity Transmitter

5. Click “Scan” to execute connection facilities
6. Scan connection facilities and set up
 - a. Select Station ID
 - b. Click “CLOSE AND EXPORT”

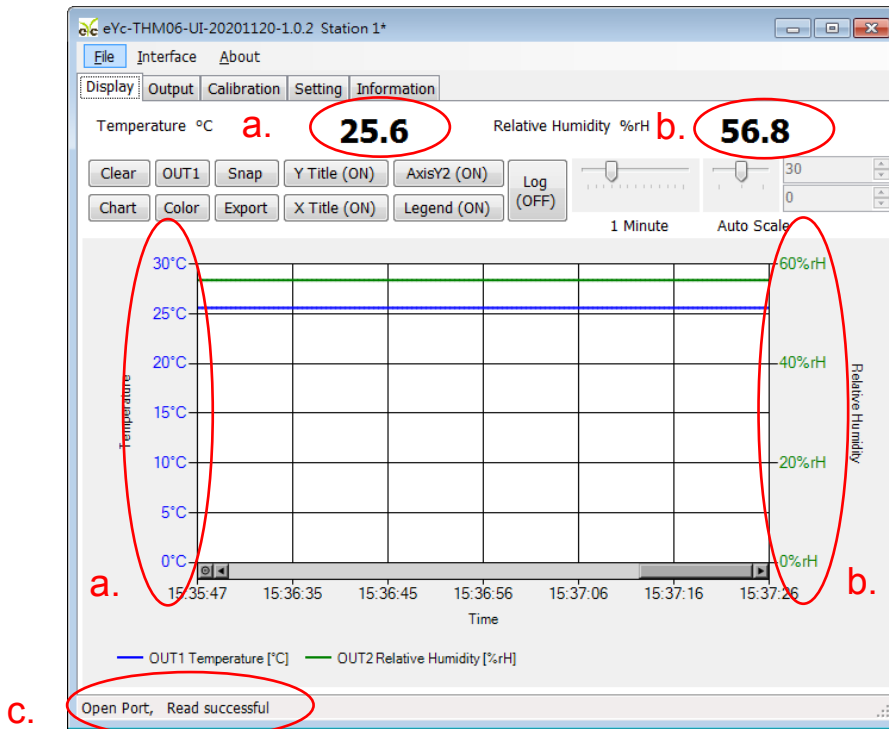


7. Click “Apply”



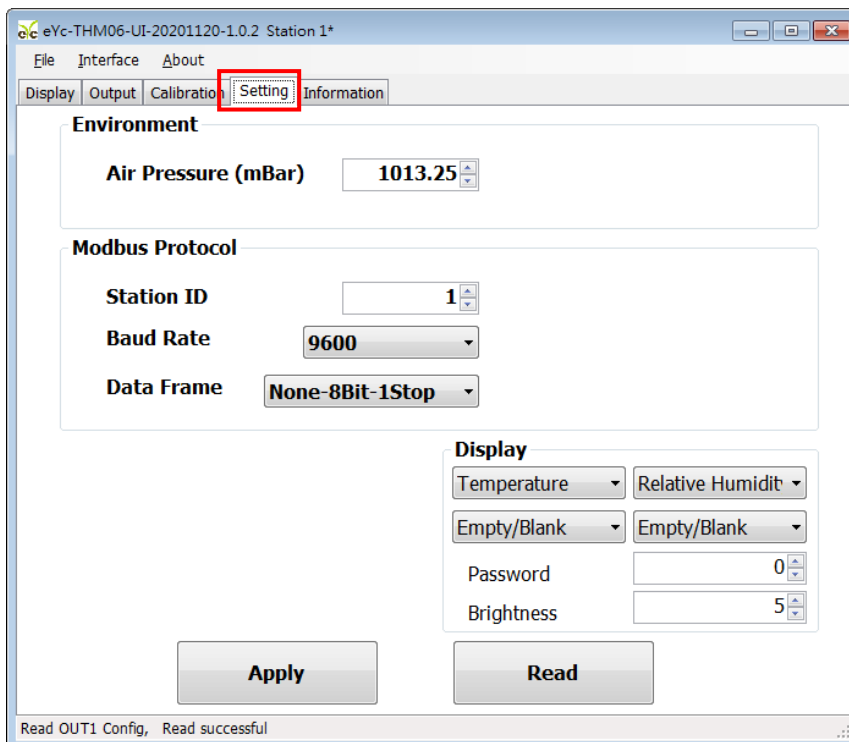
Industrial Accuracy Temp. & Humidity Transmitter

8. Connect successfully
 - a. Show values and trend chat Dew point Temperature
 - b. Show “Open port, Read successful”



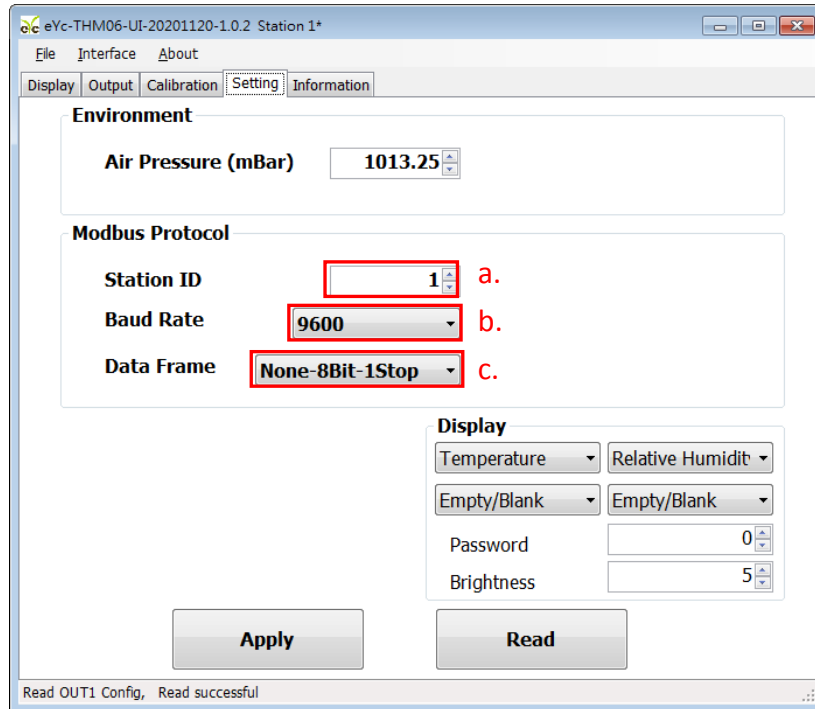
4.4 Setting RS-485 ModBus Protocol

1. Setting RS-485 connection step as step 5.1
2. Click “Setting”



Industrial Accuracy Temp. & Humidity Transmitter

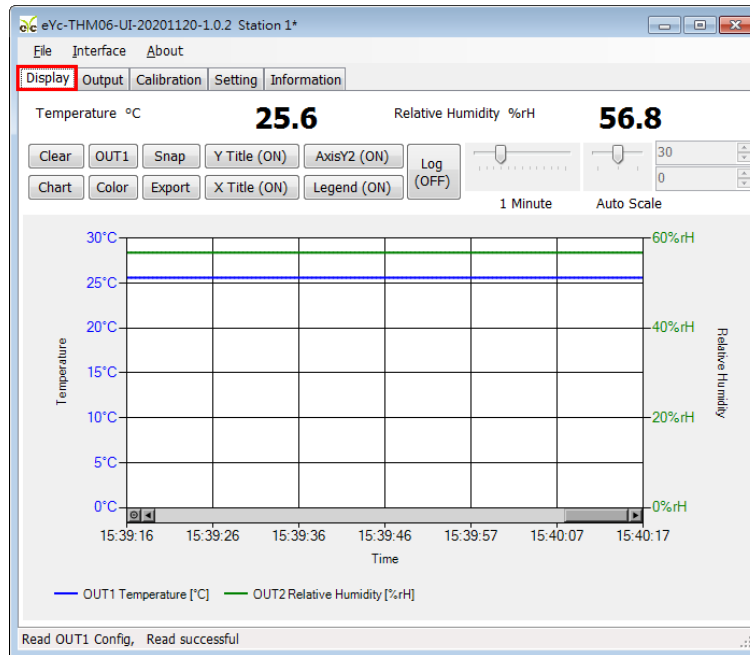
3. Select Modbus Protocol parameter
 - a. Station ID : 1~247
 - b. Baud Rate : 9600, 19200, 38400, 57600, 115200
 - c. Data Frame : None-8Bit-1Stop, None-8Bit-2Stop, Even-8Bit-1Stop, Even-8Bit-2Stop, Odd-8Bit-1Stop, Odd-8Bit-1Stop



4. Click “Apply”
5. Execute connection as step 5.2 or 5.3 again

4.5 Display and save data

1. Show Data : Click ” Display”

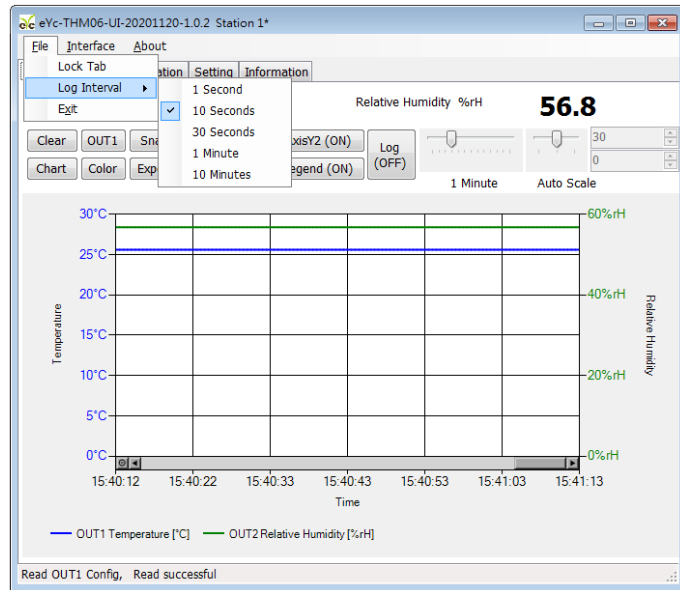


2. Icon function statements

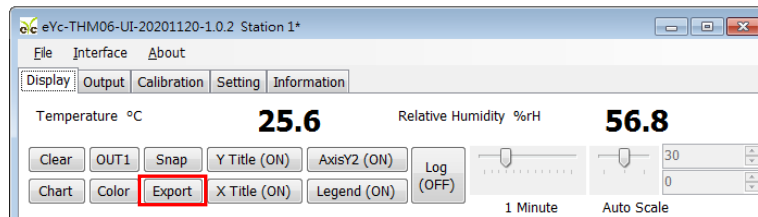
	Clear the chart records		Save the data measuring when the system start connecting before clicking the Export icon
	Change the chart style		Show/Not show the statement of Y axis
	Select the OUTPUT channel		Show/Not show the statement of X axis
	Set line color chosen from OUTPUT		Show/Not show the statement of Y secondary axis
	Snap chart		Show/ Not show chart
	Show/Not show measuring data		
	Adjust time range of X axis		
	Adjust time range of Y axis		

Industrial Accuracy Temp. & Humidity Transmitter

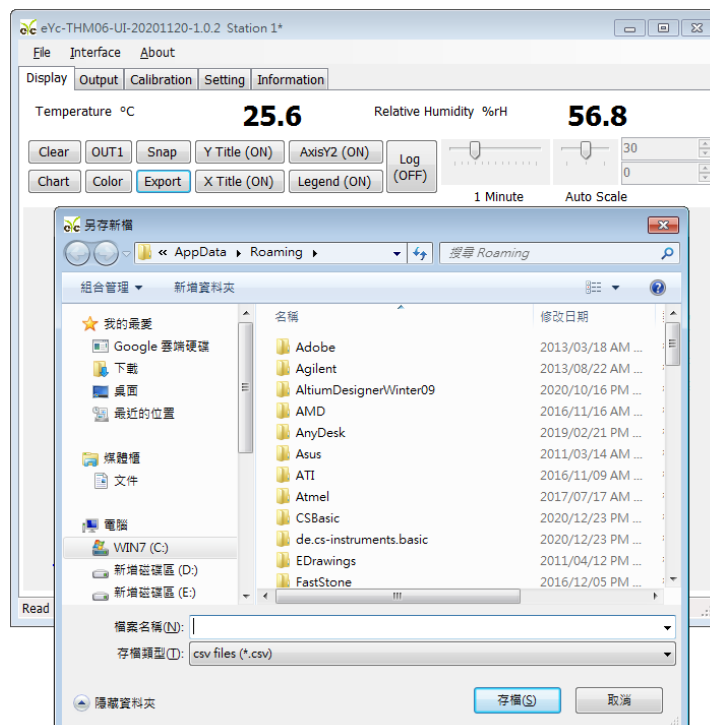
3. Setting time interval of record
 - a. File > Log Interval
 - b. Select time interval of record



4. Save/Log measuring data
 - a. Log measuring range : Save the data measuring when the system start connecting before clicking the Export icon
 - a-1. Click Display > Export



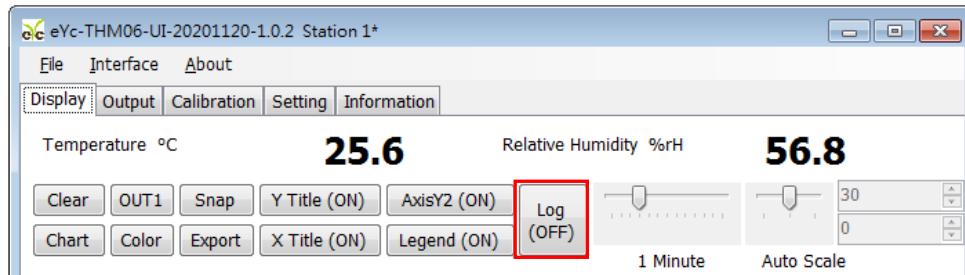
- a-2. Appoint path and Key in file name > save
 - ※1. If file name is some as the path name, the original file will be over write.



Industrial Accuracy Temp. & Humidity Transmitter

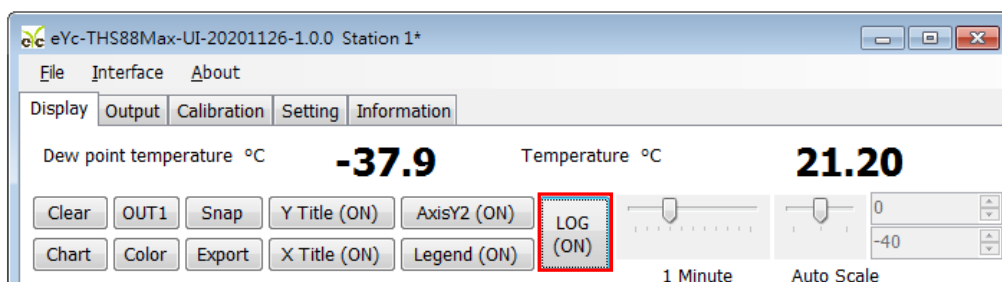
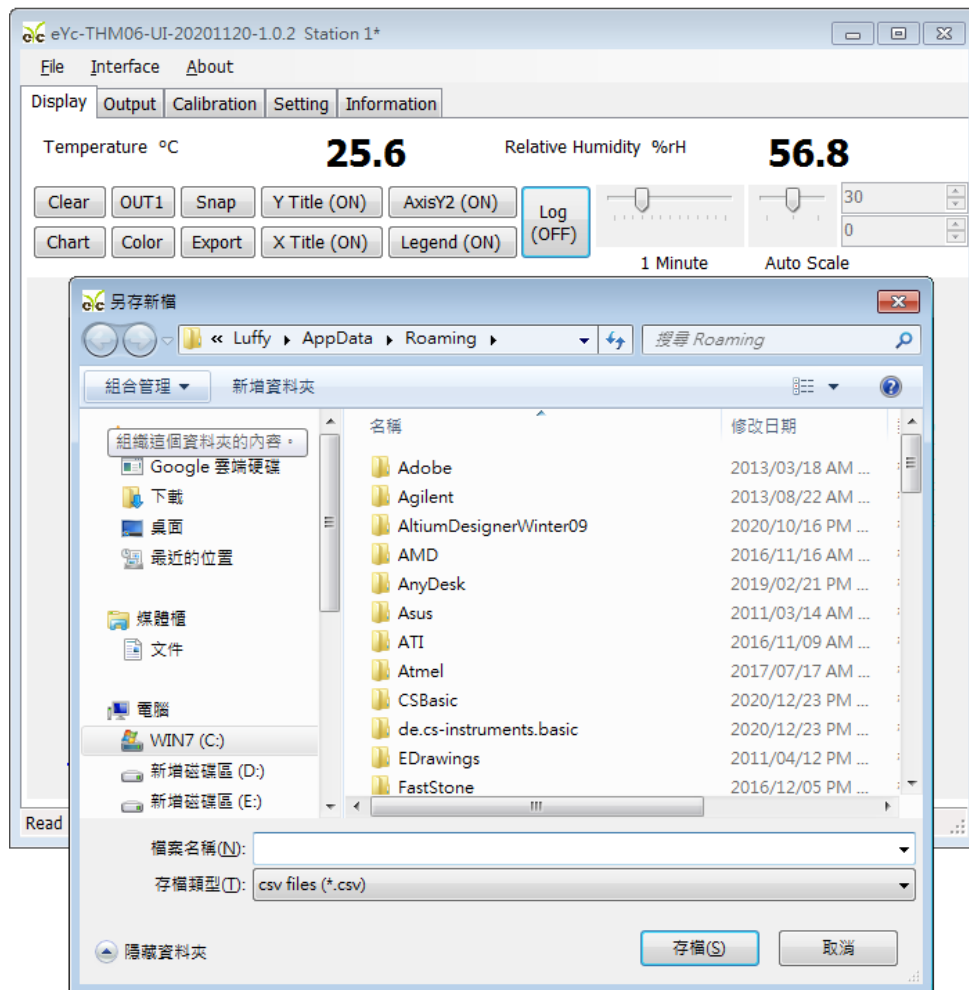
b. Log measuring data : Log the data which is on from start or off

b-1. Display > Log(OFF)



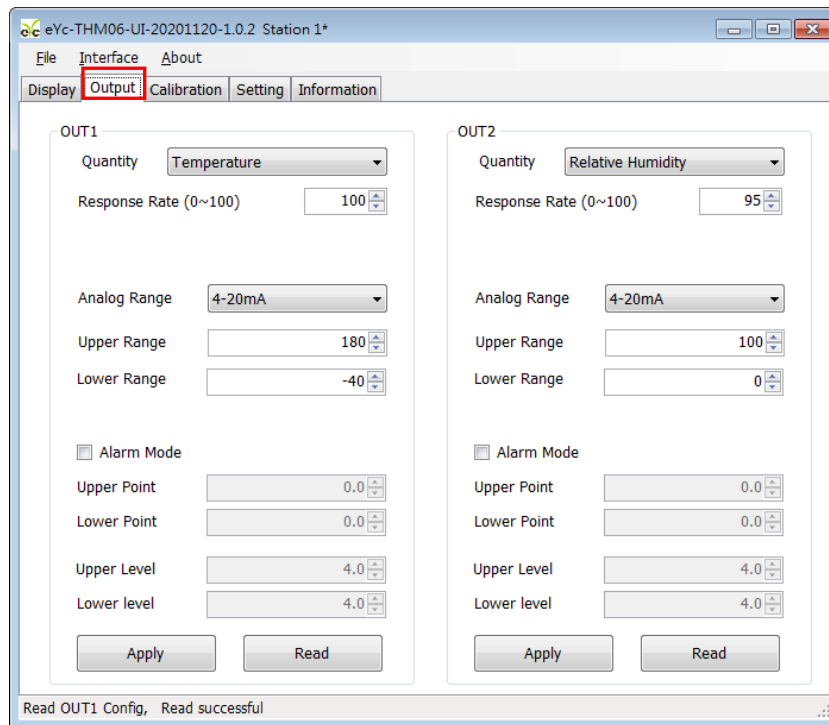
b-2. Appoint path and Key in file name > save > Log (ON)

※1. If file name is some as the path name, the original file will be over write.



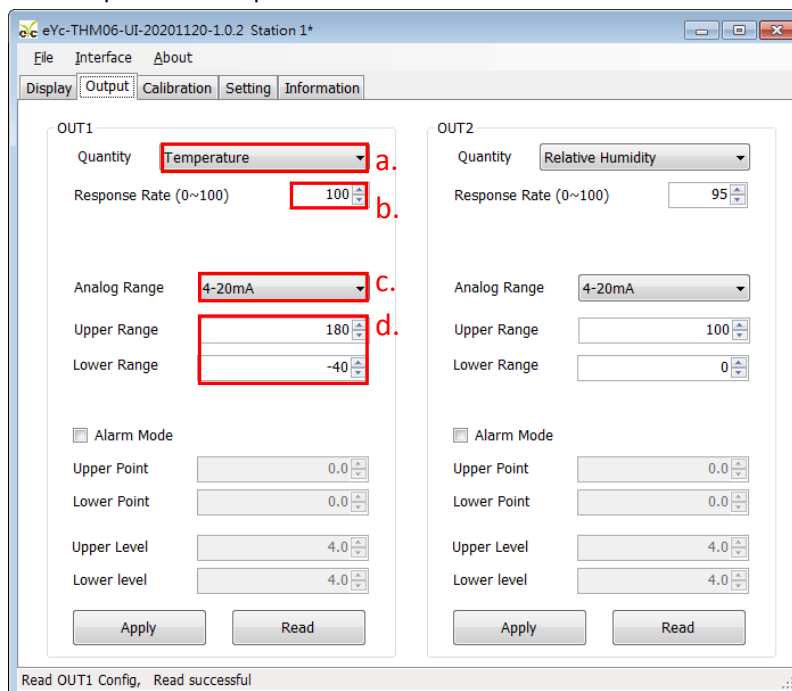
4.6 Choose parameter of Output

1. Click “Output”



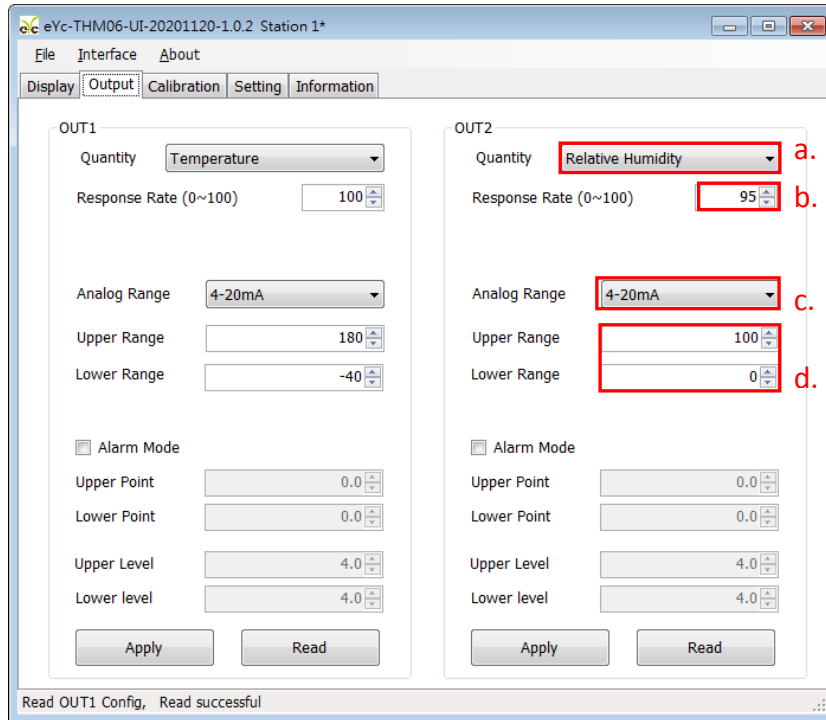
2. Select relative parameters of Output1

- a. Measures
- b. Responding Rate
- c. Voltage or current analog range
- d. Upper and Lower point of Output



Industrial Accuracy Temp. & Humidity Transmitter

3. Click “Apply”
4. Select relative parameters of Output2
 - a. Measures
 - b. Responding Rate
 - c. Upper and Lower point of Output



5. Click “Apply”

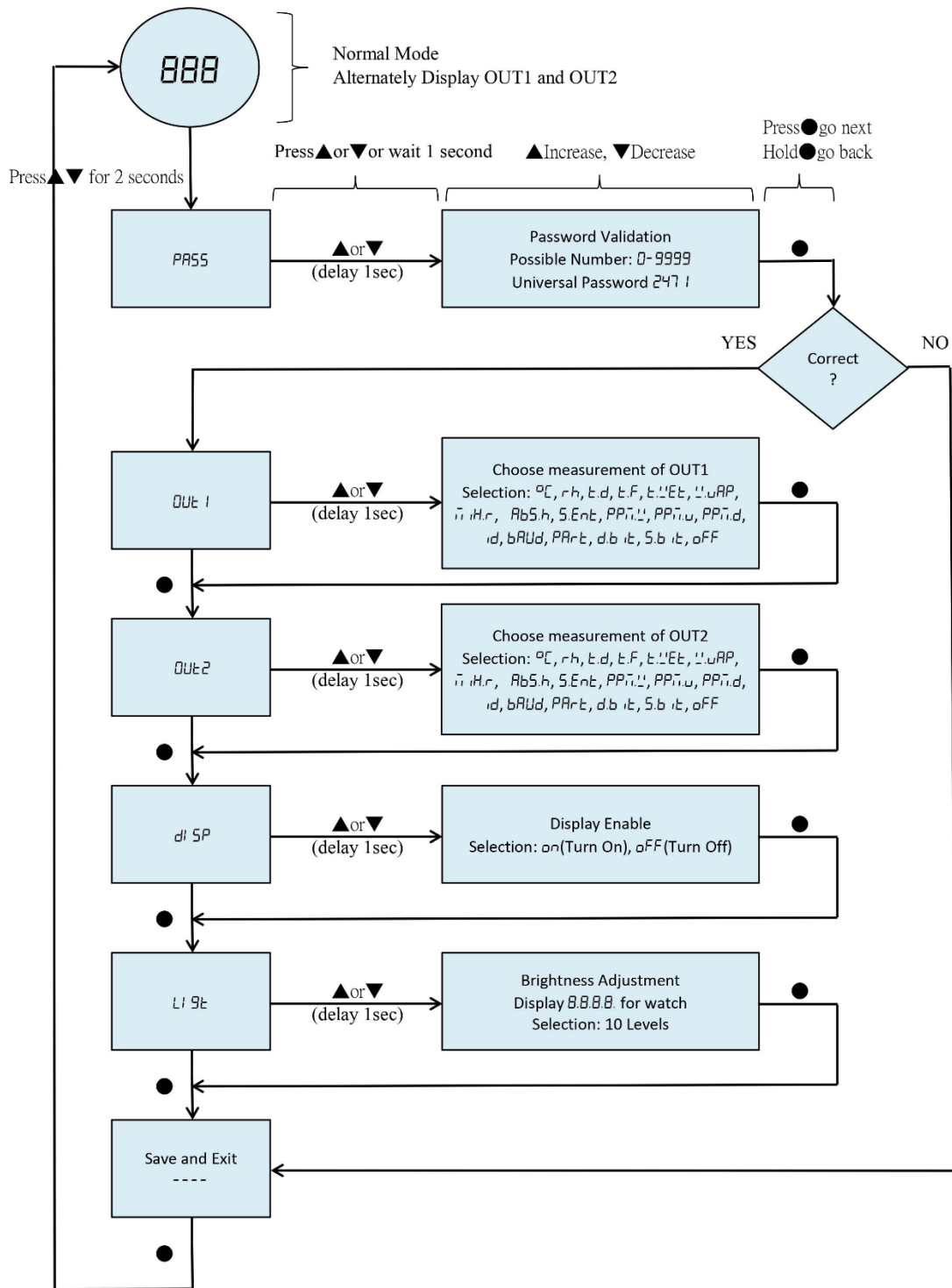
V. Display and Keypad operation menu

The THM06 with display (optional) provides 4-digit display, which adopts alternate display, each measurement value is displayed for 3 seconds, and then another measurement value is alternately displayed. The alternate display can display up to two measurement results. There are two LED sign to indicate the measurement items of the displayed value. For example, the THM06 is now display temperature of 180.0 degrees in below figure.





















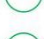

















Industrial Accuracy Temp. & Humidity Transmitter

The operation flow is as follow.



Symbol of Selection:

Symbol	Measurement	LED Sign	
°C	temperature		
rh	relative humidity		
t.d	dew point temperature		
t.F	frost point temperature		
t.WEt	wet bulb temperature		
P.uAP	water vapour pressure		
m.H.r	mixture ratio		
AbS.h	absolute humidity		
S.Ent	specific enthalpy		
PPm.w	humidity PPMw		
PPm.v	humidity PPMv		
PPm.d	humidity PPMw/v		
id	protocol, station id		
bAUd	protocol, baud rate		
PARt	protocol, parity check		
d.b it	protocol, data bit		
S.b it	protocol, stop bit		
oFF	turn off		

VI. Inspection and maintenance

1. Maintenance

Since this product is inspected and calibrated for high accuracy at the factory before shipment, no calibration on the installation site is necessary when this product is installed. For inspection and maintenance follow the instructions below :

- Periodic inspection

Periodically inspect this product for its sensing accuracy, and clean the cover. Set the period between inspections based on atmospheric dust and other contaminants in the installation environment.

2. Troubleshooting

- Sensor maintenance

Do not damage sensor surface during the maintenance process.

- Troubleshooting

If any problem occurs during operation, refer to the table below for appropriate solutions.

Problem	Cleck items	Soluations
<ul style="list-style-type: none"> ● No output ● Unstable output 	<ul style="list-style-type: none"> ● Disconnected wiring ● Loose wiring ● Power supply voltage ● Sensor damages 	<ul style="list-style-type: none"> ● Re-perform wiring ● Crew on terminal tightly or replace wires ● Replace the sensor
<ul style="list-style-type: none"> ● Slow response to output ● Errow in output 	<ul style="list-style-type: none"> ● Moisture /condensation on the product ● Check installed location ● Check installed angle ● Check dust and contamination on the sensor 	<ul style="list-style-type: none"> ● Remove the sensor and filter. Dry power-off state sensor in clean air seasoning ● Refer to the section ● Align measurement head with flow direction ● Cleaning the filter ● Changing the filter ● Calibrate ● Replace the sensor

Sustainable | Green | Professional

Temp. & Humid. / Dew Point / Air Velocity & Volume / Flow / Pressure

Measuring Specialist

Total Solution Provider



Tel.: 886-2-8221-2958

Web : www.eyc-tech.com

e-mail : info@eyc-tech.com